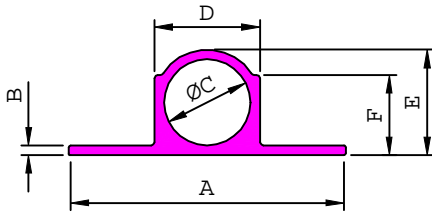


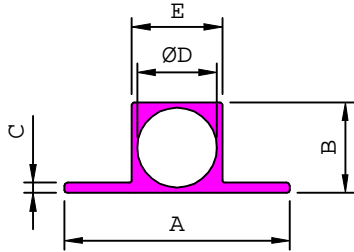
TOWER BOLT



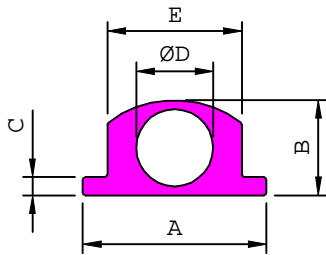
SI No	Section No	A	B	ØC	D	E	F	Weight kg/m
1	18001	24.50	0.75	8.63	10.10	10.10	8.15	0.121
2	18002	31.75	1.39	9.90	12.45	12.45	9.52	0.248
3	18003	32.00	1.60	11.00	14.00	14.00	11.00	0.302
4	18005	31.75	1.52	10.28	12.82	12.82	9.52	0.253
5	18007	44.00	2.00	13.00	17.00	17.00	13.00	0.493
6	18008	30.00	0.75	9.90	11.40	11.40	9.50	0.156
7	18009	25.00	1.35	8.50	11.00	11.20	9.00	0.202
8	18013	37.50	1.70	12.40	15.70	15.80	12.00	0.379
9	18015	31.75	1.70	10.20	12.40	12.40	9.70	0.244
10	18016	38.00	2.30	12.60	17.10	17.10	13.00	0.506
11	18017	31.20	1.57	9.70	11.90	11.90	9.10	0.229
12	18022	30.75	1.02	9.50	11.30	11.30	9.00	0.176
13	18023	31.75	1.10	10.20	12.10	12.10	9.50	0.197
14	18027	37.50	2.00	12.80	16.50	16.50	13.50	0.439
15	18029	37.00	2.20	12.00	15.00	15.50	11.70	0.396
16	18036	36.00	1.85	12.00	14.90	14.90	11.00	0.342
17	18037	30.00	0.98	9.50	10.90	10.90	8.60	0.150
18	18038	44.00	2.00	13.40	16.40	16.50	14.50	0.450
19	18039	32.00	1.25	11.00	13.40	13.40	10.50	0.246
20	18040	37.00	1.83	12.00	15.00	15.00	11.70	0.354
21	18042	23.50	0.70	8.50	9.80	9.80	7.95	0.109
22	18043	28.00	0.59	9.50	10.68	10.68	8.00	0.113
23	18045	32.00	1.30	11.00	13.60	13.60	10.80	0.262
24	18049	38.00	2.35	13.00	17.50	17.50	13.20	0.520
25	18051	31.00	1.10	9.40	11.40	11.40	8.70	0.188
26	18052	31.50	1.20	10.80	12.80	12.80	10.10	0.216
27	18055	31.75	1.40	10.20	12.40	12.40	9.10	0.226
28	18056	31.20	1.35	9.70	11.70	11.70	9.00	0.206
29	18057	38.00	1.90	12.60	16.20	16.20	12.60	0.418
30	18060	44.00	1.65	12.80	15.80	15.80	13.80	0.406
31	18062	32.00	1.22	11.00	13.44	13.40	10.80	0.248
32	18068	31.75	2.00	10.20	12.40	12.40	9.70	0.261
33	18069	31.50	1.55	10.80	12.70	12.70	10.00	0.227
34	18070	31.50	1.40	10.80	12.60	12.60	10.00	0.214
35	18071	31.00	1.40	10.80	12.20	12.20	9.60	0.189
36	18074	36.00	1.40	11.00	12.50	12.50	9.40	0.213
37	18075	36.00	1.70	12.00	13.90	13.90	10.50	0.267
38	18079	30.00	1.45	9.50	11.00	11.30	9.20	0.191
39	18084	30.15	1.20	9.60	11.30	11.30	8.30	0.176
40	18085	37.00	1.90	12.40	14.60	14.60	11.50	0.312

SI No	Section No	A	B	ØC	D	E	F	Weight kg/m
41	18088	31.00	1.05	10.50	11.80	11.80	9.40	0.163
42	18093	37.10	2.20	12.20	14.80	14.80	12.00	0.357
43	18073	30.00	1.50	9.50	11.10	11.10	9.00	0.189
44	18096	37.00	2.45	12.00	15.00	11.70	15.50	0.411
45	18097	30.15	1.05	9.60	11.30	8.30	11.30	0.169
46	18106	37.50	2.30	12.80	16.20	16.20	12.60	0.428
47	18113	31.00	1.25	10.60	12.00	12.00	9.60	0.180
48	18114	30.75	1.15	9.80	11.40	11.40	9.00	0.175
49	18115	31.25	1.78	10.80	12.70	12.70	10.00	0.237

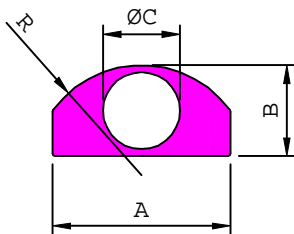
TOWER BOLT



Sl No	Section No	A	B	C	ØD	E	Weight kg/m
1	18065	37.15	14.85	1.60	12.30	15.15	0.381
2	18066	31.00	12.40	0.90	11.00	12.40	0.203
3	18067	31.00	12.00	0.80	10.75	12.00	0.184
4	18076	31.00	12.45	1.40	11.00	12.45	0.232
5	18087	31.00	12.10	1.20	10.60	12.10	0.218
6	18089	37.15	14.50	1.30	12.30	14.50	0.326
7	18090	37.00	14.85	1.50	12.60	14.80	0.346
8	18101	30.80	11.75	0.70	10.50	11.75	0.175
9	18108	31.00	12.10	1.30	10.80	12.10	0.214
10	18122	36.50	14.30	1.50	12.40	14.30	0.316
11	18123	30.50	11.80	1.20	10.50	11.80	0.202



Sl No	Section No	A	B	C	ØD	E	Weight kg/m
1	18063	25.30	13.10	2.50	10.60	18.50	0.411
2	18064	25.00	12.80	2.00	10.60	17.50	0.361
3	18078	25.00	12.80	1.80	10.60	14.20	0.281
4	18083	25.30	13.30	2.30	10.60	14.60	0.326
5	18094	25.00	12.50	1.60	10.80	15.75	0.291
6	18099	23.90	12.40	1.50	10.60	14.60	0.262
7	18072	24.80	12.60	1.90	10.60	16.00	0.313
8	18107	24.60	12.60	1.80	10.80	15.70	0.292
9	18111	23.30	12.20	1.20	10.70	14.30	0.227
10	18124	24.00	12.40	1.50	10.80	15.00	0.256
11	18126	23.30	12.20	1.10	10.80	13.00	0.189

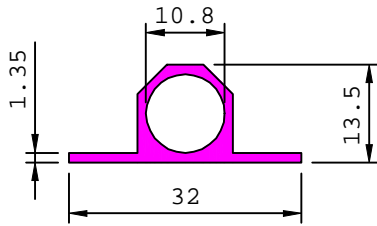


Sl No	Section No	A	B	ØC	R	Weight kg/m
1	18125	24.20	12.20	10.20	15.50	0.461
2	18100	24.50	12.50	10.60	15.10	0.464

TOWER BOLT

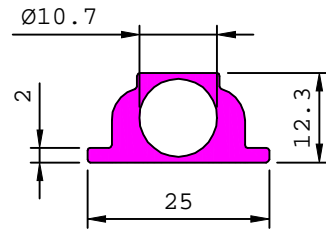
18019

0.255 kg/m



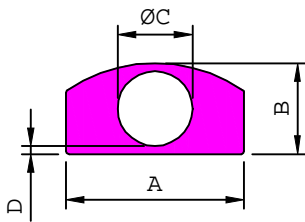
18077

0.340 kg/m

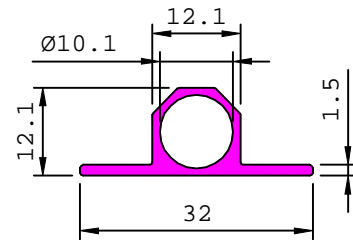


18081

0.225 kg/m

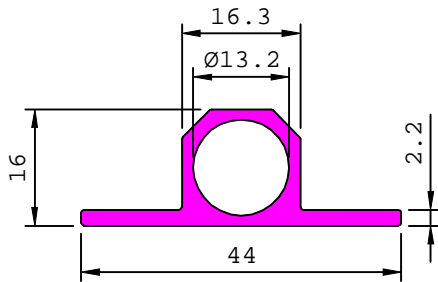


Sl No	Section No	A	B	ØC	D	Weight kg/m
1	18080	24.50	12.50	10.30	1.10	0.520
2	18112	23.00	12.20	10.40	0.90	0.417



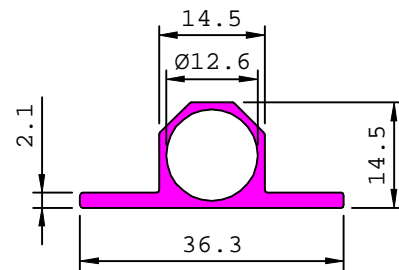
18082

0.458 kg/m



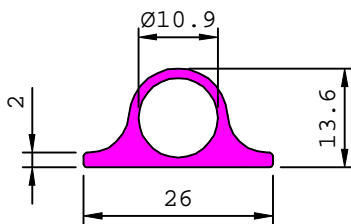
18086

0.306 kg/m



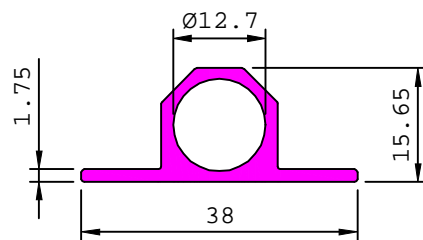
18091

0.295 kg/m



18092

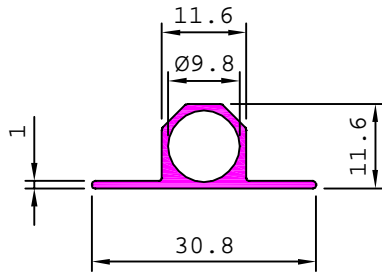
0.378 kg/m



TOWER BOLT

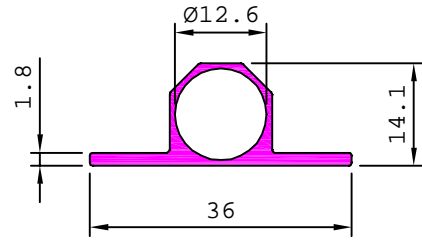
18095

0.180 kg/m



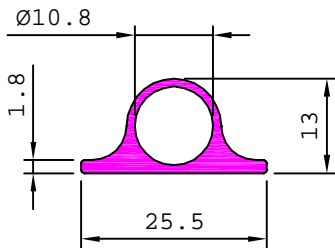
18098

0.260 kg/m



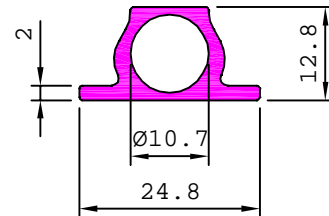
18117

0.247 kg/m



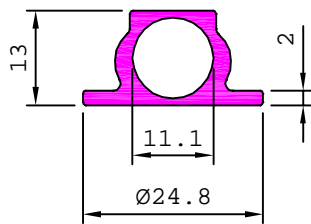
18102

0.283 kg/m



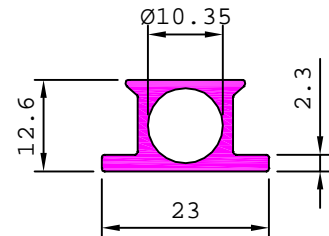
18103

0.292 kg/m



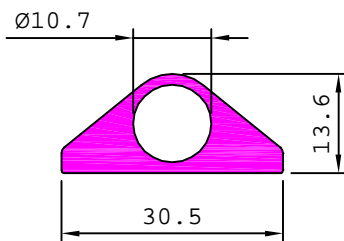
18104

0.293 kg/m



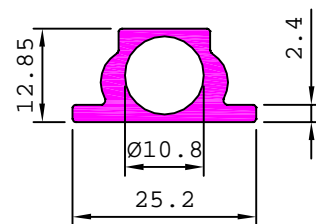
18105

0.513 kg/m



18109

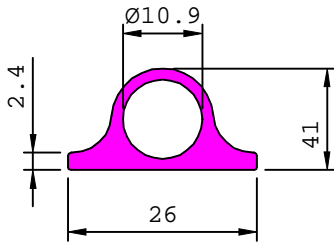
0.345 kg/m



TOWER BOLT

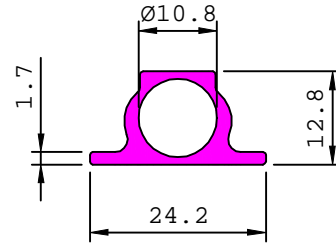
18110

0.332 kg/m



18116

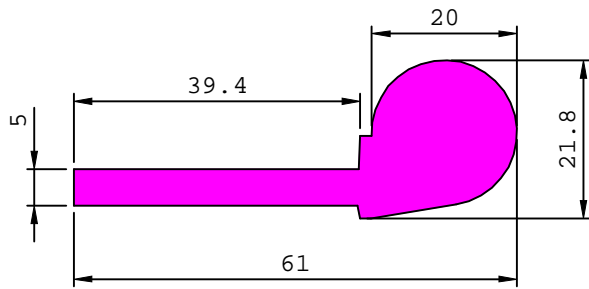
0.257 kg/m



SPECIAL HINGES

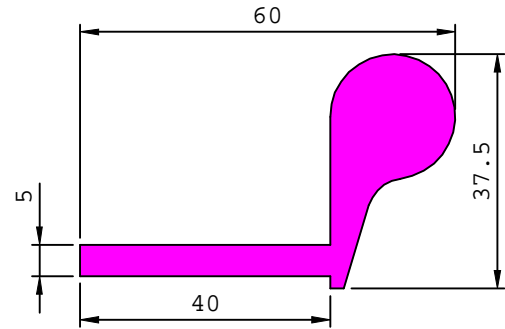
18406

1.515 kg/m



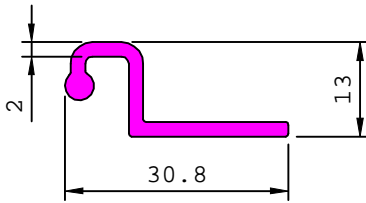
18407

1.683 kg/m



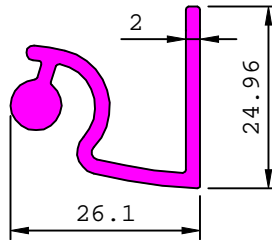
38580

0.257 kg/m



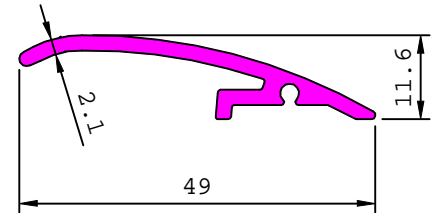
38581

0.450 kg/m

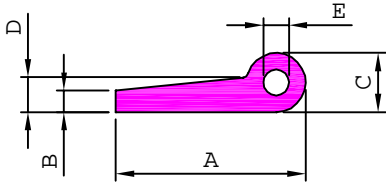


S5062

0.361 kg/m



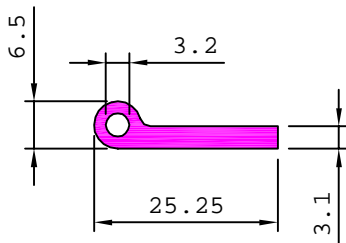
SPECIAL HINGES



SL. No.	Section No.	A	B	C	D	E	Weight kg/m
1	18353	35.76	3.10	9.52	3.60	5.00	0.390
2	18355	37.00	4.00	11.00	4.76	5.55	0.515

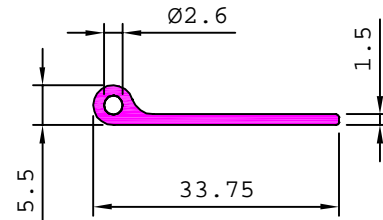
18357

0.231 kg/m



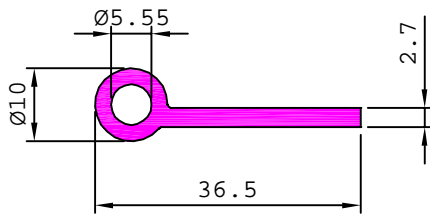
18362

0.172 kg/m



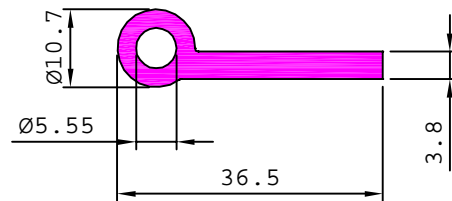
18401

0.343 kg/m



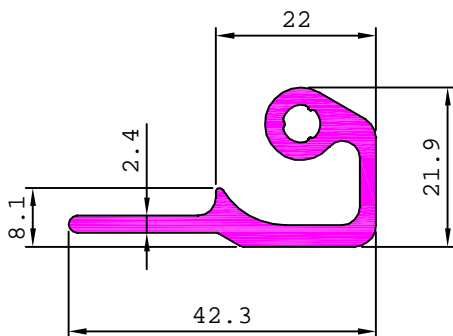
18402

0.450 kg/m



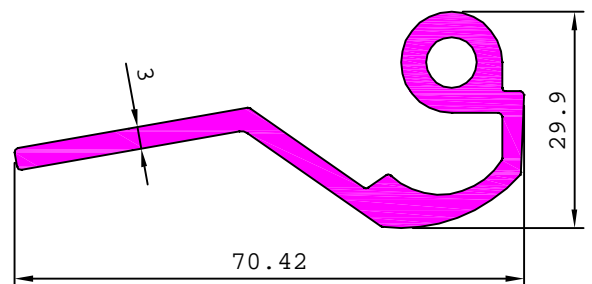
18425

0.632 kg/m



S5061

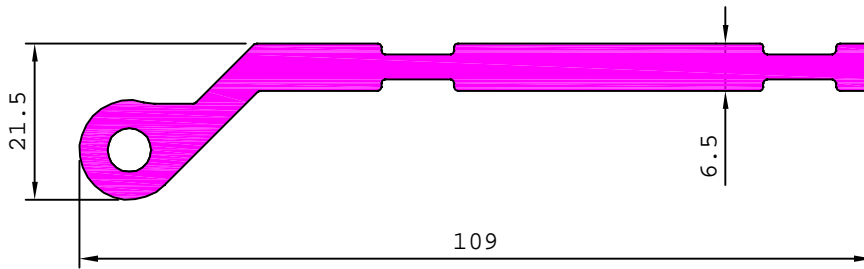
1.098 kg/m



SPECIAL HINGES

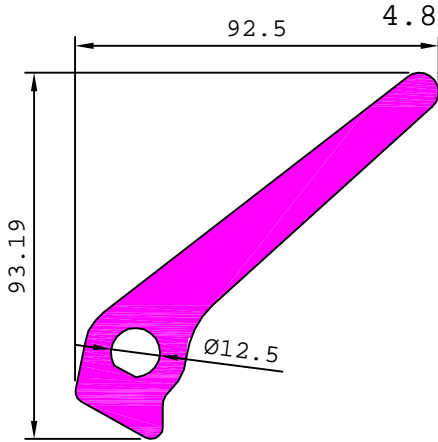
18431

1.878 kg/m



18428

4.811 kg/m



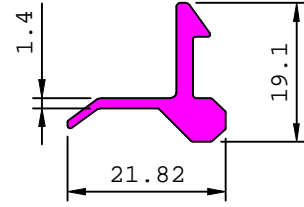
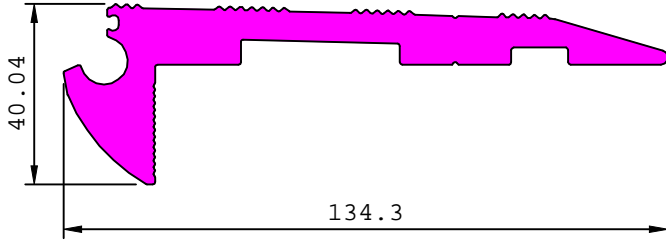
SPECIAL HINGES

18430

3.815 kg/m

18427

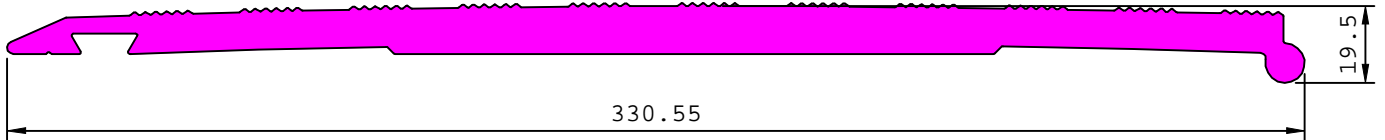
0.250 kg/m



MATCHING WITH 18429

18429

9.487 kg/m



MATCHING WITH 18430

G100072

5.595 kg/m

